

Viola di Gamba

BRD DS Mus.ms 1034/18

Ouverture

(TWV 55:D6)

G.P. Telemann (1681 — 1767)

(Largo)



6



11



17



21



25



29



33



36



38



40



42



46



51



53



55



57



65

72

75

78

82

87

(Largo)

91

96

102

(Allegro)

(Largo)

108

La Trompette

9

16

21

24

31



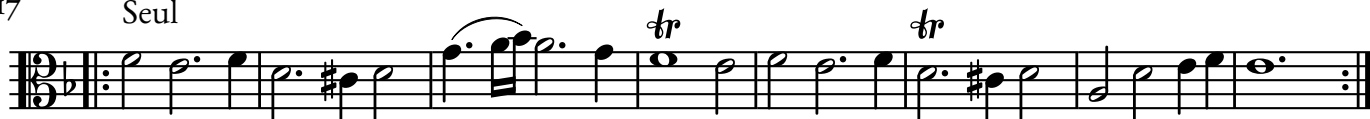
Sarabande



9



17 Seul



25



31



Rondeau



8



16



24



33



Bourée



9



16



22



30



36



43



51



Courante



5



8



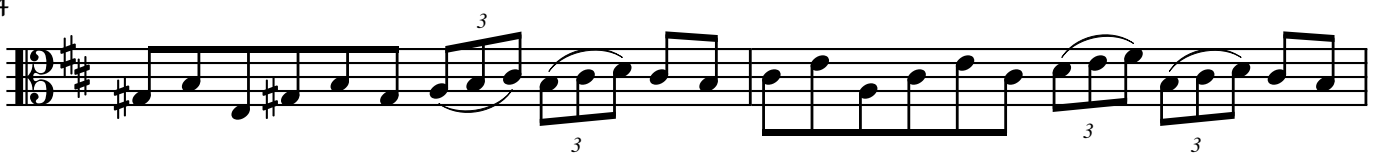
13



Double



4



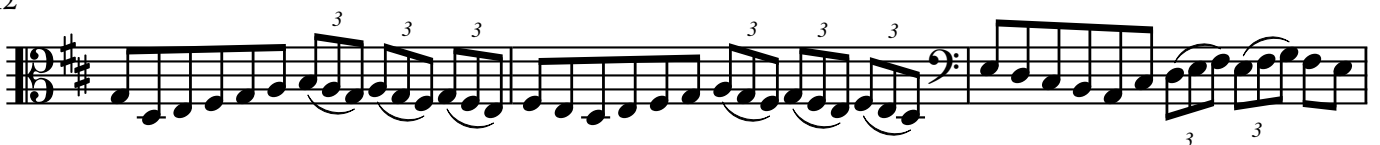
6



8



12



15



Gique

Measures 1-5 of the piece. The key signature is one sharp (F#) and the time signature is 6/8. The notation includes a trill (tr) over the final note of the fifth measure.

6

Measures 6-11. Continuation of the melodic line with various rhythmic patterns and phrasing.

12

Measures 12-18. Continuation of the melodic line, featuring a trill (tr) over the final note of the eighth measure.

19

Measures 19-23. Continuation of the melodic line with a series of eighth-note patterns.

24

Measures 24-27. Continuation of the melodic line, ending with a repeat sign.

28

Measures 28-34. Continuation of the melodic line with various rhythmic patterns and phrasing.

35

Measures 35-40. Continuation of the melodic line with various rhythmic patterns and phrasing.

41

Measures 41-46. Continuation of the melodic line with various rhythmic patterns and phrasing.

47

Measures 47-53. Continuation of the melodic line with various rhythmic patterns and phrasing.

54

Measures 54-58. Continuation of the melodic line, ending with a repeat sign.

Violino I

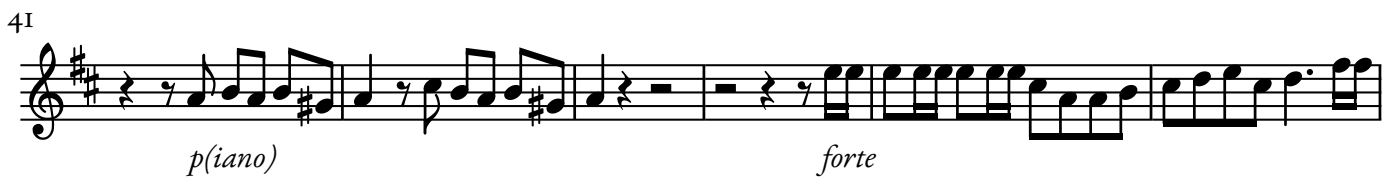
BRD DS Mus.ms 1034/18

Ouverture

(TWV 55:D6)

G.P. Telemann (1681 – 1767)

(Largo)



52



59



(forte)

63



67



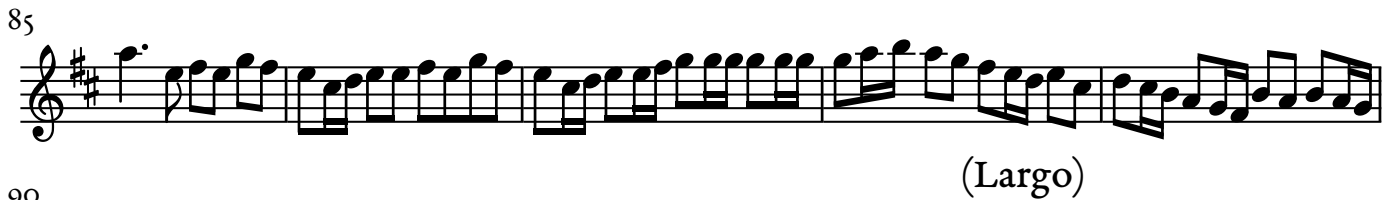
71



81



85



(Largo)

90



95



101



107



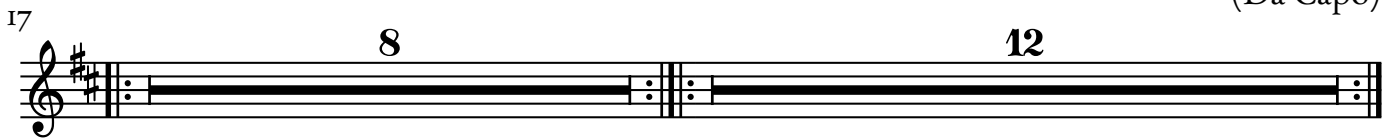
(Allegro) *(Largo)*

I. 2.

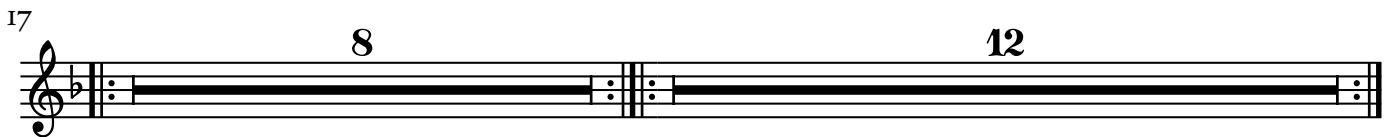
La Trompette



(Da Capo)



Sarabande



Rondeau

*p(iano)*

25

piano

This musical staff contains measures 25 through 33. It begins with a treble clef and a key signature of one sharp (F#). The music consists of a series of eighth and sixteenth notes, with a dynamic marking of *piano* centered below the staff.

34

tr Da Capo

This musical staff contains measures 34 through 38. It features a trill (*tr*) in measure 34. The piece concludes with a double bar line and the instruction *Da Capo* at the end of the staff.

Bourée

This musical staff contains measures 1 through 8 of the Bourée. It starts with a treble clef and a key signature of one sharp (F#). The music is characterized by frequent rests and eighth-note patterns.

9

This musical staff contains measures 9 through 17. It continues the rhythmic pattern of eighth notes and rests from the previous staff.

18

This musical staff contains measures 18 through 25. It includes a repeat sign with first and second endings. A fermata is placed over the first ending, and a double bar line with repeat dots follows. The second ending is marked with a '2' above it.

26

This musical staff contains measures 26 through 36. It features several first and second endings, each marked with a '2' above the staff.

37

This musical staff contains measures 37 through 46. It continues the sequence of first and second endings, with a '2' marking the second ending.

47

This musical staff contains measures 47 through 55, which is the final measure of the piece. It concludes with a double bar line and repeat dots.

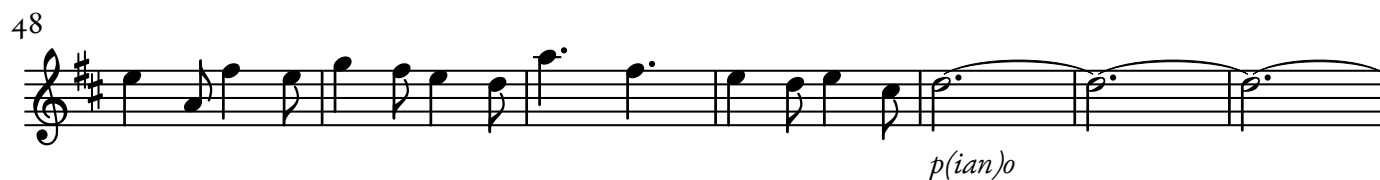
Courante



Double



Gique



Violino II

BRD DS Mus.ms 1034/18

Ouverture

(TWV 55:D6)

G.P. Telemann (1681 – 1767)

(Largo)



8



13



18

(Allegro)



23



27



31



35

4



44



50



57

(forte)

62

66

72

5

81

86

(Largo)

90

95

102

106

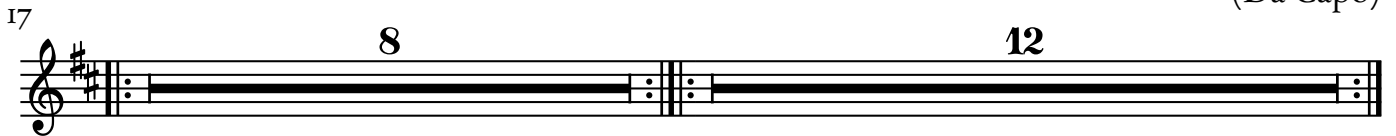
(Allegro) (Largo)

1. 2.

La Trompette



(Da Capo)



Sarabande



Rondeau

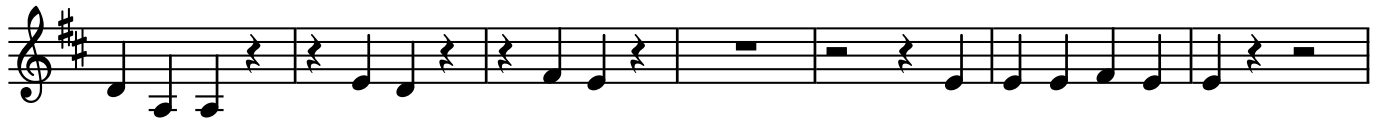
*p(iano)**(forte)**piano*

Da Capo

Bourée



8



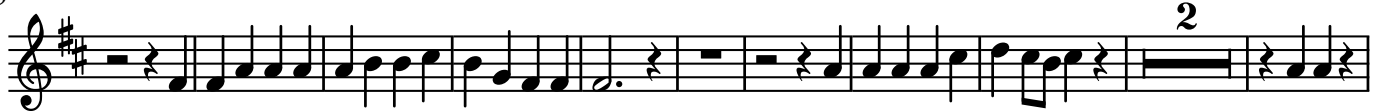
15



22



36



48



Courante



5



8



13



Double



5



8



14



Gique



9



18



28



36



44



52



Viola

BRD DS Mus.ms 1034/18

Ouverture

(TWV 55:D6)

G.P. Telemann (1681 – 1767)

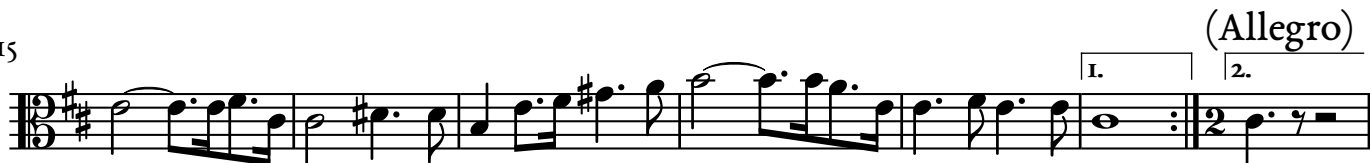
(Largo)



8



15



21



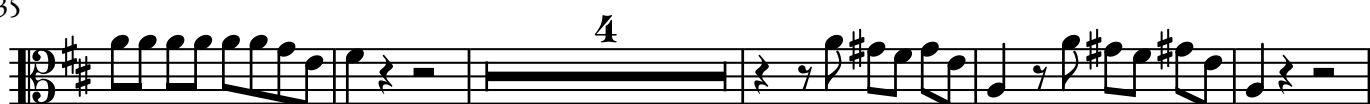
26



31



35



(piano)

44



(forte)

50



(piano)

57



(forte)

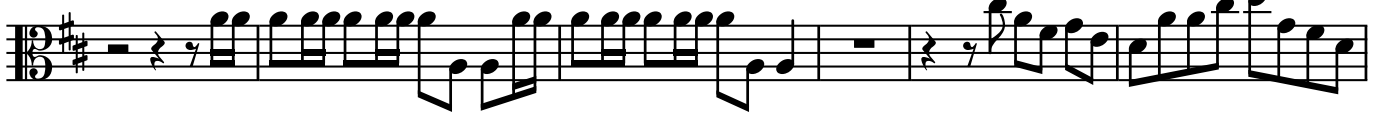
62



67



77



83



88



92

(Largo)



99



105

(Allegro) (Largo)



La Trompette



Sarabande



Rondeau



II



2I



3I



Bourée



8



15



22



36



47



Courante



6



II



Double



6



12



Gique



9



18



28



35



43



52



Basso

BRD DS Mus.ms 1034/18

Ouverture

(TWV 55:D6)

G.P. Telemann (1681 — 1767)

(Largo)



8



13



18



(Allegro)

21



26



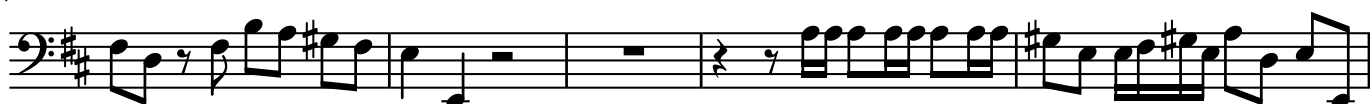
30



34



40



45



50



58



62



67



72



79



84



88



92

(Largo)



98



105

(Allegro) (Largo)



La Trompette



Sarabande



Rondeau

10

20

32

Da Capo

Bourée

7

15

22

31

40

49

Courante



5



8



13



Double



5



8



13



Gique



8



15



22



28



36



44



52

