

Viola di Gamba

Sonata I

Jacob Richmann (1680-1720)

Preludio Largo

Measures 1-4 of the Preludio Largo. The music is in G major, 3/4 time, and begins with a series of chords in the left hand and a melodic line in the right hand.

Measures 5-7 of the Preludio Largo. The melodic line continues with eighth notes, and the left hand provides harmonic support with chords.

Measures 8-10 of the Preludio Largo. The piece concludes with a final cadence in G major.

Measures 1-3 of the Allemanda. The music is in G major, 3/4 time, and starts with a rhythmic pattern of eighth notes.

Allemanda

Measures 4-7 of the Allemanda. The melodic line features eighth-note patterns, and the left hand has a steady accompaniment.

Measures 8-10 of the Allemanda. The piece ends with a final cadence in G major.

Measures 11-13 of the Allemanda. This section continues the eighth-note melodic pattern.

Measures 14-16 of the Allemanda. The piece concludes with a final cadence in G major.

Measures 1-3 of the Corrente. The music is in G major, 3/4 time, and begins with a rhythmic pattern of eighth notes.

Measures 4-6 of the Corrente. The melodic line continues with eighth notes, and the left hand provides harmonic support.

Corrente

Measures 7-9 of the Corrente. The piece concludes with a final cadence in G major.

Measures 10-12 of the Corrente. This section continues the eighth-note melodic pattern.

Measures 13-15 of the Corrente. The piece ends with a final cadence in G major.

Measures 16-18 of the Corrente. This section continues the eighth-note melodic pattern.

Measures 19-21 of the Corrente. The piece concludes with a final cadence in G major.

Measures 22-24 of the Corrente. This section continues the eighth-note melodic pattern.

Sarabanda

Measures 1-6 of the Sarabanda. The music is in 3/8 time and features a melodic line with eighth notes and a bass line with chords and eighth notes. A flat (b) is present above the final measure.

7

Measures 7-12 of the Sarabanda. The melodic line continues with eighth notes, and the bass line provides harmonic support with chords and eighth notes.

13

Measures 13-18 of the Sarabanda. The melodic line features a rising eighth-note scale, and the bass line includes a sharp sign (#) in the final measure.

19

Measures 19-24 of the Sarabanda. The melodic line continues with eighth notes, and the bass line features a final cadence with a double bar line and repeat dots.

Giga

Measures 1-5 of the Giga. The music is in 6/8 time and features a melodic line with eighth notes and a bass line with chords and eighth notes.

6

Measures 6-11 of the Giga. The melodic line continues with eighth notes, and the bass line includes a sharp sign (#) in the final measure.

12

Measures 12-17 of the Giga. The melodic line features eighth notes, and the bass line includes a flat sign (b) in the final measure.

18

Measures 18-23 of the Giga. The melodic line continues with eighth notes, and the bass line includes a sharp sign (#) in the final measure.

24

Measures 24-29 of the Giga. The melodic line continues with eighth notes, and the bass line features a final cadence with a double bar line and repeat dots.

Sarabanda

Measures 1-4 of the Sarabanda. The music is in 3/8 time and features a melodic line with eighth notes and a bass line with chords and eighth notes.

5

Measures 5-8 of the Sarabanda. The melodic line continues with eighth notes, and the bass line includes a sharp sign (#) in the final measure.

9

Measures 9-12 of the Sarabanda. The melodic line features eighth notes, and the bass line includes a sharp sign (#) in the final measure.

13

Measures 13-16 of the Sarabanda. The melodic line continues with eighth notes, and the bass line includes a sharp sign (#) in the final measure.

Giga

Measures 1-5 of the Giga. The music is in 6/8 time and features a melodic line with eighth notes and a bass line with chords and eighth notes.

6

Measures 6-9 of the Giga. The melodic line continues with eighth notes, and the bass line includes a sharp sign (#) in the final measure.

10

Measures 10-14 of the Giga. The melodic line features eighth notes, and the bass line includes a sharp sign (#) in the final measure.

15

Measures 15-19 of the Giga. The melodic line continues with eighth notes, and the bass line features a final cadence with a double bar line and repeat dots.

Corrente

Sonata II

Jacob Richmann (1680-1720)

Preludio Largo

Musical notation for measures 1-2 of the Preludio Largo section, featuring a bass clef and a 3/4 time signature.

Allegro

Musical notation for measures 3-4 of the Allegro section, continuing the bass clef and 3/4 time signature.

Adagio

Musical notation for measures 5-6 of the Adagio section, continuing the bass clef and 3/4 time signature.

Musical notation for measures 7-9 of the Adagio section, including a large slur over measures 7-9.



Musical notation for measures 19-22, continuing the bass clef and 3/4 time signature.

Musical notation for measures 23-26, continuing the bass clef and 3/4 time signature.

Musical notation for measures 27-30, continuing the bass clef and 3/4 time signature.

Musical notation for measures 31-34, continuing the bass clef and 3/4 time signature.

Musical notation for measures 35-38, continuing the bass clef and 3/4 time signature.

Musical notation for measures 39-42, continuing the bass clef and 3/4 time signature.

Musical notation for measures 43-45, continuing the bass clef and 3/4 time signature.

Musical notation for measures 46-49, continuing the bass clef and 3/4 time signature.

Musical notation for measures 50-51, ending with a double bar line. The word *Piano* is written below the staff.

Sonata VI

Jacob Richmann (1680-1720)

Preludio

Musical score for the Preludio of Sonata VI, featuring a single staff with a treble clef and a common time signature. The piece consists of several lines of music with various rhythmic patterns and accidentals.

Allemanda Allegro

Musical score for the Allemanda Allegro of Sonata VI, featuring a single staff with a treble clef and a common time signature. The piece consists of several lines of music with various rhythmic patterns and accidentals.

Allemanda

Musical score for the Allemanda of Sonata VI, featuring a single staff with a treble clef and a common time signature. The piece consists of several lines of music with various rhythmic patterns and accidentals.

Corrente

Measures 1-4 of the Corrente. The music is in bass clef, 3/4 time, and G major. It begins with a bass line of quarter notes: G2, A2, B2, C3, D3, E3, F3, G3. The right hand has a series of chords: G3-B3-D4, A3-C4-E4, B3-D4-F4, G4-B4-D5, A4-C5-E5, B4-D5-F5, G5-B5-D6, A5-C6-E6.

Measures 5-8 of the Corrente. The bass line continues with quarter notes: A2, B2, C3, D3, E3, F3, G3, A3. The right hand has chords: B3-D4-F4, C4-E4-G4, D4-F4-A4, E4-G4-B4, F4-A4-C5, G4-B4-D5, A4-C5-E5, B4-D5-F5.

Measures 9-12 of the Corrente. The bass line continues with quarter notes: B2, C3, D3, E3, F3, G3, A3, B3. The right hand has chords: C4-E4-G4, D4-F4-A4, E4-G4-B4, F4-A4-C5, G4-B4-D5, A4-C5-E5, B4-D5-F5, C5-E5-G5.

Measures 13-16 of the Corrente. The bass line continues with quarter notes: C3, D3, E3, F3, G3, A3, B3, C4. The right hand has chords: D4-F4-A4, E4-G4-B4, F4-A4-C5, G4-B4-D5, A4-C5-E5, B4-D5-F5, C5-E5-G5, D5-F5-A5.

Measures 17-20 of the Corrente. The bass line continues with quarter notes: D3, E3, F3, G3, A3, B3, C4, D4. The right hand has chords: E4-G4-B4, F4-A4-C5, G4-B4-D5, A4-C5-E5, B4-D5-F5, C5-E5-G5, D5-F5-A5, E5-G5-B5.

Measures 21-24 of the Corrente. The bass line continues with quarter notes: E3, F3, G3, A3, B3, C4, D4, E4. The right hand has chords: F4-A4-C5, G4-B4-D5, A4-C5-E5, B4-D5-F5, C5-E5-G5, D5-F5-A5, E5-G5-B5, F5-A5-C6.



Sarabanda

Measures 1-4 of the Sarabanda. The music is in bass clef, 3/4 time, and G major. It begins with a bass line of quarter notes: G2, A2, B2, C3, D3, E3, F3, G3. The right hand has a series of chords: G3-B3-D4, A3-C4-E4, B3-D4-F4, G4-B4-D5, A4-C5-E5, B4-D5-F5, G5-B5-D6, A5-C6-E6.

Measures 5-8 of the Sarabanda. The bass line continues with quarter notes: A2, B2, C3, D3, E3, F3, G3, A3. The right hand has chords: B3-D4-F4, C4-E4-G4, D4-F4-A4, E4-G4-B4, F4-A4-C5, G4-B4-D5, A4-C5-E5, B4-D5-F5.

Measures 9-12 of the Sarabanda. The bass line continues with quarter notes: B2, C3, D3, E3, F3, G3, A3, B3. The right hand has chords: C4-E4-G4, D4-F4-A4, E4-G4-B4, F4-A4-C5, G4-B4-D5, A4-C5-E5, B4-D5-F5, C5-E5-G5.

Giga

Measures 1-4 of the Giga. The music is in bass clef, 6/8 time, and G major. It begins with a bass line of eighth notes: G2, A2, B2, C3, D3, E3, F3, G3. The right hand has a series of chords: G3-B3-D4, A3-C4-E4, B3-D4-F4, G4-B4-D5, A4-C5-E5, B4-D5-F5, G5-B5-D6, A5-C6-E6.

Measures 5-8 of the Giga. The bass line continues with eighth notes: A2, B2, C3, D3, E3, F3, G3, A3. The right hand has chords: B3-D4-F4, C4-E4-G4, D4-F4-A4, E4-G4-B4, F4-A4-C5, G4-B4-D5, A4-C5-E5, B4-D5-F5.

Measures 9-12 of the Giga. The bass line continues with eighth notes: B2, C3, D3, E3, F3, G3, A3, B3. The right hand has chords: C4-E4-G4, D4-F4-A4, E4-G4-B4, F4-A4-C5, G4-B4-D5, A4-C5-E5, B4-D5-F5, C5-E5-G5.

Measures 13-16 of the Giga. The bass line continues with eighth notes: C3, D3, E3, F3, G3, A3, B3, C4. The right hand has chords: D4-F4-A4, E4-G4-B4, F4-A4-C5, G4-B4-D5, A4-C5-E5, B4-D5-F5, C5-E5-G5, D5-F5-A5.

Corrente

Sarabanda Allegro

Giga

Sonata III

Jacob Richmann (1680-1720)

Preludio Largo

Measure 1 of the Preludio Largo, starting with a treble clef, a key signature of one sharp (F#), and a common time signature (C). The melody begins with a quarter note F#4, followed by a series of eighth notes.

Measure 4 of the Preludio Largo, showing a continuation of the melodic line with various rhythmic values and a repeat sign.

Measure 6 of the Preludio Largo, featuring a change in the bass line and a repeat sign.

Measure 8 of the Preludio Largo, continuing the melodic development with a repeat sign.

Measure 10 of the Preludio Largo, showing a continuation of the melodic line with a repeat sign.

Measure 12 of the Preludio Largo, featuring a section labeled "Arpeggio" with a treble clef and a key signature of one sharp.

Allemanda Largo

Measure 1 of the Allemanda Largo, starting with a treble clef, a key signature of one sharp, and a common time signature. The melody begins with a quarter note F#4.

Measure 4 of the Allemanda Largo, showing a continuation of the melodic line with a repeat sign.

Allemanda

Measure 1 of the Allemanda, starting with a bass clef, a key signature of one flat (Bb), and a common time signature. The melody begins with a quarter note Bb3.

Measure 5 of the Allemanda, showing a continuation of the melodic line with a repeat sign.

Measure 9 of the Allemanda, featuring a change in the bass line and a repeat sign.

Measure 12 of the Allemanda, continuing the melodic development with a repeat sign.

Measure 15 of the Allemanda, showing a continuation of the melodic line with a repeat sign.

Measure 19 of the Allemanda, featuring a section labeled "Arpeggio" with a treble clef and a key signature of one flat.

Measure 22 of the Allemanda, showing a continuation of the melodic line with a repeat sign.

Measure 25 of the Allemanda, continuing the melodic development with a repeat sign.

Sonata V

Jacob Richmann (1680-1720)

Preludio

Allegro

Adagio

Corrente

Sarabanda

Giga

Corrente

Musical score for Corrente, measures 1-28. The piece is in 3/8 time and B-flat major. It features a single melodic line in the bass clef. Measure numbers 5, 9, 13, 17, 23, and 28 are indicated at the start of their respective staves. The score concludes with a repeat sign and a fermata over the final measure.

Sarabanda

Musical score for Sarabanda, measures 1-5. The piece is in 3/8 time and B-flat major. It features a single melodic line in the bass clef. Measure number 5 is indicated at the start of the second staff. The score concludes with a repeat sign and a fermata over the final measure.

Musical score for Corrente, measures 9-13. This is a continuation of the piece from page 15. Measure numbers 9 and 13 are indicated at the start of their respective staves.

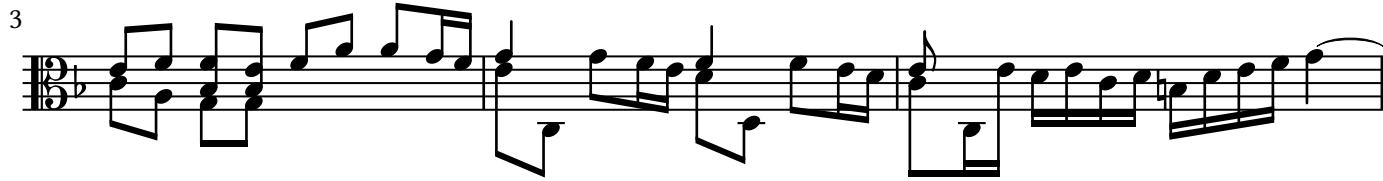
Giga

Musical score for Giga, measures 1-26. The piece is in 6/8 time and D major. It features a single melodic line in the bass clef. Measure numbers 5, 9, 14, 18, 22, and 26 are indicated at the start of their respective staves. The score concludes with a repeat sign and a fermata over the final measure.

Sonata IV

Jacob Richmann (1680-1720)

Preludio Largo



Allemanda

