

Basso Continuo

I – Sonata à 2.

August Kühnel (1645 – ca. 1700)

(Preludio)

4 2 7 # 6 7 7 5 3 4 5 5 6 7 6 7 6 7 6 7 6 4 3

13 Allegro

4 2 6 4 3 6 7 6 6 6

27

6 4 # 4 # 6 4 # 6 6

40

6 6 6 6 6 6 5 4 3 6 6 6 6 4 #

50

5 4 2 4 3 6 7 6 6 6 #

64

6 4 # # # 4 # # 6 # 4 # # 6 6 6 6b

77

6 # 6 6 6 5 4 # 6 6 6 6 6 7 5 3 4

Adagio (Variatio I, II et III)

6 6 7 7 6 5b 6 5 6 5 # 6 7 4 # #

9

6 5 # 6 5 6 5 4 # 6 6 6 4 3

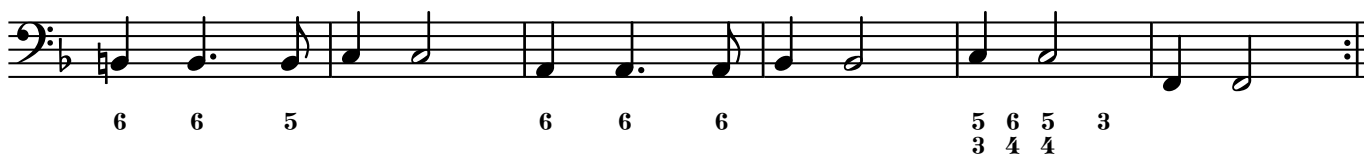
Aria



13

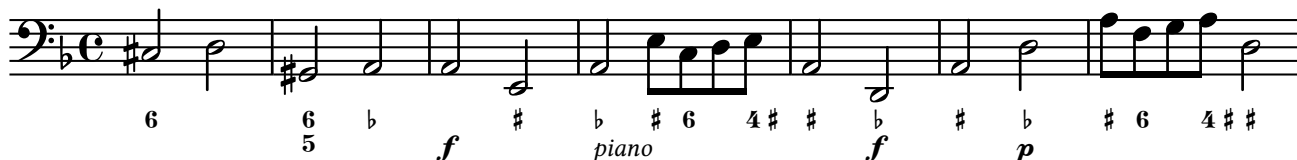


24

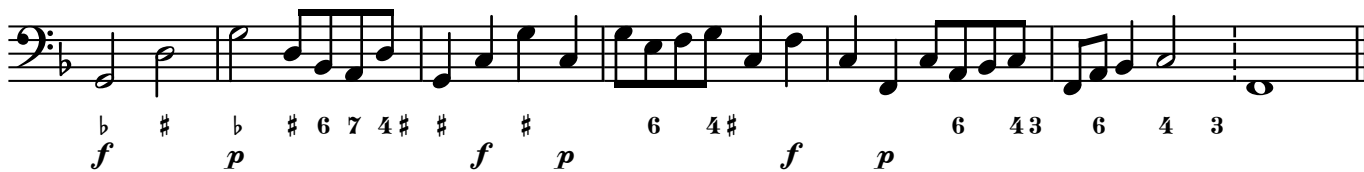


(Adagio)

Allegro

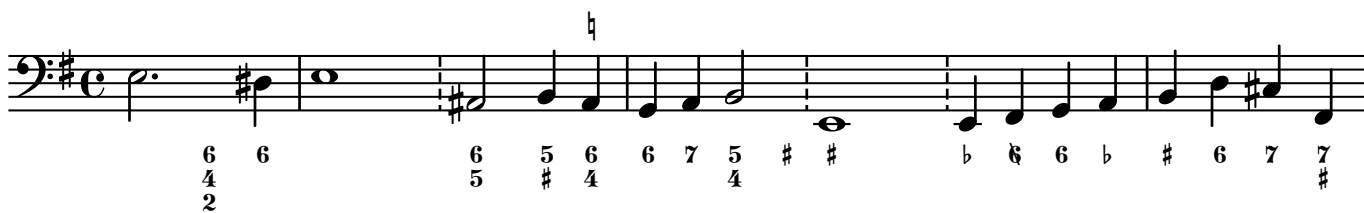


8



II – Sonata à 2.

August Kühnel (1645 – ca. 1700)



8



15



Aria

6 4 # 6 4 #

9

6 6 5 # 6 5 # 6 5 6 7 5 # 4

19

6 4 # 6 4 #

27

6 6 5 # 6 5 # 6 5 6 7 5 # 4

(Andante)

6 6 6 b 6 5 6 5 # 6 6 # 6 5 # 6

6

7 6 7 6 7 6 7 4 # # 6 6 6 4 # 6 #

12

4 # 5 6 5 # 6 # 6 6 4 # 6 6 6

18

Allegro

4 # 6 # # 4 # 5 6 # # 6 6 5 4 # # #

25

#

Aria allegro

4 # 6 5 # 6 5 # 7 7

16

6 5 b 6 5 6 4 # 6 6 # b 4 #

32

4 # 6 5 # 6 5 # 7 7

39

6 5 b 6 5 6 4 # 6 6 # b 4 #

Adagio

7 6 6 6 # 6 6 5 b # 6 5 b 4 6 7 6 6 5 6

10

5 # 5 6 5 # 6 5 # 5 6 5 # b 4 # #

4 # 4 # 4 # 4 # 4 # 4 # 4 #

piano



III – Sonata à 2.

August Kühnel (1645 – ca. 1700)

(Variatio 1., 2. et 3.)

6 # 6 5 6 7 7 6 5 # 6 5 # 7 6 #

15

b 7 b 5 3 6 5 b 6 5 6 b 6 5

(Variatio) 4.

57

4 5 3 4 3 8 7 5 6b 7 6 7 6 7 6 7 7 3 6 5 b # 6 # 7 6 #

64

b 7 6 7 5 b 3 6 6 7 6 6 7 4 #

(Variatio) 5.

71

6 5 5 6 5 6 6 6 7 6 6 # 7 6 #

78

b 5 6b 5 3 6 6 6 b 5 6 5 #

(Variatio) 6.

85

6 5 # 6 6 6 b 6 6 5 # 7 6 #

92

b 5 b 6 5 3 6 6 6 b 5 6 5 #

IV – Sonatina à 2.

August Kühnel (1645 – ca. 1700)

Allegro

3

6 6 # # 6 6

8

6 5 6 # 6 # b 6 6 #

12

6 6 # 5 6 # # 5 6 5 # 5 6 5 #

Allemande

6

4

6 5 6 6 6 # 6 6 b # 6 6 5

8

6 5 6 6 6 4 3 # 6 4 # b # 6 4 # 4

piano

Corrente

6 6 6 4 # 6 5 6 4 3

8

6 6 5 # 6 5 # 6 5 6 #

15

6 6 6 5 4

23

6 7 6 # # 6 6 6 4 #

Sarabande adagio

4 # 4 3 6 7 6 #

9

6 6 6 5 # 6 6 5 4 #

Gavotta allegro

6 6 # 6 6 4 3 % # # 7 4 ##

9

b 5 b 6 4 3 # 4 # (D.S.)

Giga Allegro

6 6 7 6 # # 6 6 6 6 6 5

12

6 5 # 6 6 5 6 4

23

6 6 # 6 # # # #

34

6 5 3 6 # 6 4 #

V – Sonatina à 2, *Serenata* August Kühnel (1645 – ca. 1700)

Adagio

6 # # 6 # 6 6 6 7 4 3

6 5 5 # 6 6 # 5 4 # 4 6

5 6 5 6 5 5 4 4

6 6 # *piano*

6 6 4

6 7 4 3 b # 5 6 5 6 5 6 5 6 5 b 5 6 5 #

Allegro

6 6 # 6 6 5 #

6 5b b 6b 5b 6 5 # 6 6 6 6 5

6 5 6 # #

b # 6 6 5 # #

35 Adagio

6 6 5 b 5 # # # 7 6 7 6b
5 5 4 4 4

42

7 6 7 6 7 6 6 b 5 # (piano) 5 #
b 4 4 4 4 4 4 4 4

Entrata Presto

6 6 # # 6 5 6 5 b # 6 4 # #
piano forte

8

b # 6 4 # # b b 6 p b 6 b 4 3
piano f p f

14

6 5 # 6 5 # 6 6 4 # p # 4 #
b 4 4 4 4 4 4 4 4

Aria Adagio

6 4 # # # #

9

6 6 # 6 6 b # 6 6 5 #
5 4 4 4 4 4 4 4

Gavotta Allegro

6 # 6 4 # 6 5 3 # 6 4 ##
5 4 4 4 4 4 4 4

7

b 4 3 6 6 # b 6 5 # # 6 6 4

Sarabande Adagio

6 # 6 5 & # 4 # #

9

6 5 # 6 & 4 # # # 6 6 5 #
5 5 4

Giga Allegro

6 # 6 6 # 6

10

7 5 3 6 5 # 6 7 6
5 4

19

& 6 b # 6 # 6

30

6 # # 6 # 6 6 # 6 6 4 #

Retirata Presto

6 5 6 6 5 # b # #

9

b b 4 4 6 # 6 4 #



Sarabanda Adagio

Measures 1-6 of the Sarabanda Adagio. The music is in bass clef with a 3/4 time signature. The notes are: G2, A2, B2, C3, D3, E3. Fingering: 6, 5, 6, 5, #. Dynamics: *f* for measures 1-3, *p* for measures 4-6.

f 6 5 6 5 # *p* 6 5 #

7

Measures 7-12 of the Sarabanda Adagio. The music is in bass clef with a 3/4 time signature. The notes are: F#2, G2, A2, B2, C3, D3, E3, F#3, G3, A3, B3, C4. Fingering: 6, 6, 5, #, 6, 4, #, 6, 4, #. Dynamics: *f* for measures 7-9, *p* for measures 10-12.

f 6 6 5 # 6 4 # *p* 6 4 #

13

Measures 13-18 of the Sarabanda Adagio. The music is in bass clef with a 3/4 time signature. The notes are: C4, D4, E4, F#4, G4, A4, B4, C5, B4, A4, G4, F#4, E4, D4, C4. Fingering: #, b, 6, 6. Dynamics: *f* for measures 13-15, *p* for measures 16-18.

f # b 6 *p* 6

19

Measures 19-24 of the Sarabanda Adagio. The music is in bass clef with a 3/4 time signature. The notes are: C4, D4, E4, F#4, G4, A4, B4, C5, B4, A4, G4, F#4, E4, D4, C4. Fingering: 6, 6, 5, b, 4, #, 4, #. Dynamics: *f* for measures 19-21, *p* for measures 22-24.

f 6 6 5 b 4 # *p* 4 #

Giga Allegro

Measures 1-11 of the Giga Allegro. The music is in bass clef with a 3/4 time signature. The notes are: G2, A2, B2, C3, D3, E3, F#3, G3, A3, B3, C4, B3, A3, G3, F#3, E3, D3, C3, B2, A2, G2. Fingering: 6, 5, 6, 5, 6, 6, #, 6, 5, #, 6, 7, 6. Dynamics: *f* for measures 1-11.

6 5 6 5 6 6 # 6 5 # 6 7 6

12

Measures 12-22 of the Giga Allegro. The music is in bass clef with a 3/4 time signature. The notes are: G2, A2, B2, C3, D3, E3, F#3, G3, A3, B3, C4, B3, A3, G3, F#3, E3, D3, C3, B2, A2, G2. Fingering: 6, 7, 6, #, 6, 7, 6, 6, 7, 6. Dynamics: *p* for measures 12-13, *f* for measures 14-16, *p* for measures 17-22.

p 6 7 6 *f* 6 # 6 7 6 *p* 6 7 6

23

Measures 23-33 of the Giga Allegro. The music is in bass clef with a 3/4 time signature. The notes are: G2, A2, B2, C3, D3, E3, F#3, G3, A3, B3, C4, B3, A3, G3, F#3, E3, D3, C3, B2, A2, G2. Fingering: #, #, 6, #, #, b, #, #. Dynamics: *f* for measures 23-25, *p* for measures 26-33.

f # # 6 # # b # # *p*

34

Measures 34-39 of the Giga Allegro. The music is in bass clef with a 3/4 time signature. The notes are: G2, A2, B2, C3, D3, E3, F#3, G3, A3, B3, C4, B3, A3, G3, F#3, E3, D3, C3, B2, A2, G2. Fingering: 6, 6, 6, 4, #, 6, 4, #. Dynamics: *f* for measures 34-36, *(p)* for measures 37-39.

f 6 6 6 4 # 6 4 # *(p)*