
John
Dowland
(1563 - 1626)

Lachrimæ or Seaven Tears

FIGURED IN SEAVEN PASSIONATE PAVANS
with divers other pavans, galliards and allemands
set forth for the Lute, Viols or Violins, in five parts

London 1605

Tenor 

1. Lachrimæ Antiquæ

Musical score for '1. Lachrimæ Antiquæ' in 3/8 time. The score consists of five staves of music. The first staff begins with a treble clef and a common time signature. The second staff has a bass clef. The music features a mix of eighth and sixteenth notes, with some rests and repeat signs. Measure numbers 5, 10, 15, 20, and 25 are indicated above the staves.

2. Lachrimæ Antiquæ Novæ

Musical score for '2. Lachrimæ Antiquæ Novæ' in 3/8 time. The score consists of five staves of music. The first staff begins with a treble clef and a common time signature. The second staff has a bass clef. The music features a mix of eighth and sixteenth notes, with some rests and repeat signs. Measure numbers 5, 10, 15, and 20 are indicated above the staves.

3. Lachrimæ Gementes

Musical score for '3. Lachrimæ Gementes' in 3/8 time. The score consists of five staves of music. The first staff begins with a treble clef, a common time signature, and a key signature of one sharp (F#). The music features a mix of eighth and sixteenth notes, with some rests. Measure numbers 5, 10, 15, 20, and 25 are indicated at the start of their respective staves. The piece concludes with a double bar line and repeat dots.

4. Lachrimæ Tristes

Musical score for '4. Lachrimæ Tristes' in 3/8 time. The score consists of five staves of music. The first staff begins with a treble clef, a common time signature, and a key signature of one sharp (F#). The music features a mix of eighth and sixteenth notes, with some rests. Measure numbers 5, 10, 15, 20, and 25 are indicated at the start of their respective staves. The piece concludes with a double bar line and repeat dots.

5. Lachrimæ Coactæ

Musical score for '5. Lachrimæ Coactæ' in 3/4 time, bass clef. The score consists of five staves of music. Measure numbers 5, 10, 15, and 20 are indicated above the staves. The piece concludes with a double bar line and repeat dots.

6. Lachrimæ Amantis

Musical score for '6. Lachrimæ Amantis' in 3/4 time, bass clef. The score consists of five staves of music. Measure numbers 5, 10, 15, and 20 are indicated above the staves. A sharp sign (#) is placed above the staff at measure 20. The piece concludes with a double bar line and repeat dots.

7. Lachrimæ Veræ

Musical score for '7. Lachrimæ Veræ' in bass clef with a common time signature. The score consists of six staves of music. The first staff begins with a common time signature. The second staff is marked with a '5' above the first measure. The third staff is marked with a '10' above the first measure. The fourth staff is marked with a '15' above the first measure. The fifth staff is marked with a '20' above the first measure. The sixth staff concludes the piece with a double bar line and repeat dots. The music features various note values, rests, and phrasing slurs.



8. Semper Dowland semper dolens

Musical score for 'Semper Dowland semper dolens' in G major, 3/4 time. The score consists of eight staves of music. The first staff begins with a treble clef, a key signature of one sharp (F#), and a common time signature (C). The piece is marked with measure numbers 5, 10, 15, 20, 25, and 30. A fourth finger fingering (4) is indicated above the note in measure 20. The piece concludes with a double bar line and repeat dots.

9. Sir Henry Umptons Funerall

Musical score for 'Sir Henry Umptons Funerall' in G minor, 3/4 time. The score consists of two staves of music. The first staff begins with a treble clef, a key signature of two flats (Bb, Eb), and a common time signature (C). The piece is marked with measure number 5. The score concludes with a double bar line and repeat dots.

10

b 15

20

b b

b 25

This system contains five staves of music in bass clef with a key signature of one flat. The first staff begins with a double bar line and a repeat sign. Measure numbers 10, 15, 20, and 25 are indicated above the staves. Flats (b) are placed above specific notes in measures 12, 14, 21, and 23. The system concludes with a double bar line and repeat sign.

10. M. John Langtons Pavan

5

10

15

20

This system contains five staves of music in bass clef with a key signature of one flat. Measure numbers 5, 10, 15, and 20 are indicated above the staves. The system concludes with a double bar line and repeat sign.

11. The King of Denmarkes Galiard



9



19



12. The Earle of Essex Galiard

7)



9



17



13. Sir John Souch his Galiard



9



17



14. M. Henry Noell his Galiard



9



17



25



15. M. Giles Hobies Galiard



5



9



17



16. M. Nichol. Gryffith his Galiard



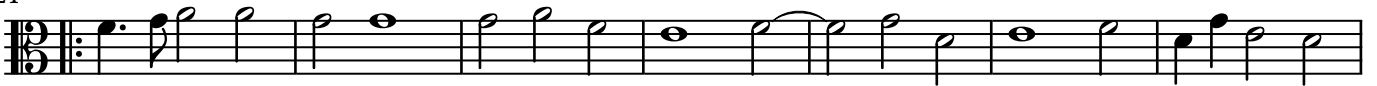
9



15



21



28

17. M: Thomas Collier his Galiard
with 2. Trebles

9



17



18. Capitaine Digorie Piper his Galiard

Musical score for '18. Capitaine Digorie Piper his Galiard'. The score is written in bass clef with a key signature of one flat (B-flat) and a common time signature (C). It consists of three staves of music. The first staff starts with a measure of rest followed by a series of eighth and quarter notes. The second staff begins at measure 9 and continues the melodic line. The third staff begins at measure 17 and concludes the piece with a double bar line and repeat dots.

19. M. Buctons Galiard

Musical score for '19. M. Buctons Galiard'. The score is written in bass clef with a key signature of one flat (B-flat) and a common time signature (C). It consists of three staves of music. The first staff starts with a measure of rest followed by a series of eighth and quarter notes. The second staff begins at measure 9 and continues the melodic line. The third staff begins at measure 17 and concludes the piece with a double bar line and repeat dots. There are two flats (b) above the staff in the third staff.

20. M^{rs}. Nichols Almande

Musical score for '20. M^{rs}. Nichols Almande'. The score is written in bass clef with a key signature of one flat (B-flat) and a common time signature (C). It consists of two staves of music. The first staff starts with a common time signature (C) and a series of eighth and quarter notes. The second staff begins at measure 8 and continues the melodic line, concluding with a double bar line and repeat dots.

21. M. George Whitehead his Almand



9



17

