
John
Dowland
(1563 - 1626)

Lachrimæ or Seaven Tears

FIGURED IN SEAVEN PASSIONATE PAVANS
with divers other pavans, galliards and allemands
set forth for the Lute, Viols or Violins, in five parts

London 1605

Quintus 𐍂

3. Lachrimæ Gementes

Musical score for 'Lachrimæ Gementes' in bass clef, common time. The score consists of five staves. The first staff begins with a measure containing a whole note G2 and a half note G2. The second staff contains measures 5 through 10, with a repeat sign at the end of measure 10. The third staff continues the melody. The fourth staff contains measures 15 through 20, with a key signature change to one sharp (F#) at the beginning of measure 15. The fifth staff contains measures 20 through 25, ending with a double bar line and repeat dots.

4. Lachrimæ Tristes

Musical score for 'Lachrimæ Tristes' in bass clef, common time. The score consists of five staves. The first staff begins with a measure containing a whole note G2 and a half note G2. The second staff contains measures 5 through 10, with a first fingering '1)' above the first measure and a repeat sign at the end of measure 10. The third staff continues the melody. The fourth staff contains measures 15 through 20, with a key signature change to one sharp (F#) at the beginning of measure 15. The fifth staff contains measures 20 through 25, ending with a double bar line and repeat dots.

5. Lachrimæ Coactæ

Musical score for '5. Lachrimæ Coactæ' in bass clef, 3/4 time. The score consists of five staves of music. The key signature has one sharp (F#). The piece begins with a whole rest on the first staff. The notation includes various note values (quarter, eighth, sixteenth notes), rests, and phrasing slurs. Measure numbers 5, 10, 15, and 20 are indicated above the staves. The piece concludes with a double bar line and repeat dots.

6. Lachrimæ Amantis

Musical score for '6. Lachrimæ Amantis' in bass clef, 3/4 time. The score consists of five staves of music. The key signature has one sharp (F#). The notation includes various note values (quarter, eighth, sixteenth notes), rests, and phrasing slurs. Measure numbers 5, 10, 15, 20, and 25 are indicated above the staves. The piece concludes with a double bar line and repeat dots.

7. Lachrimæ Veræ

Musical score for '7. Lachrimæ Veræ' in bass clef, common time. The score consists of six staves of music. The first staff begins with a treble clef and a common time signature. The second staff is marked with a '5' at the beginning. The third staff is marked with a '10' at the beginning. The fourth staff is marked with a '15' at the beginning. The fifth staff is marked with a '20' at the beginning. The sixth staff concludes the piece with a double bar line and repeat dots. The music features various note values, including quarter, eighth, and sixteenth notes, as well as rests and accidentals.



8. Semper Dowland semper dolens

5

10

15

20

25

30

35

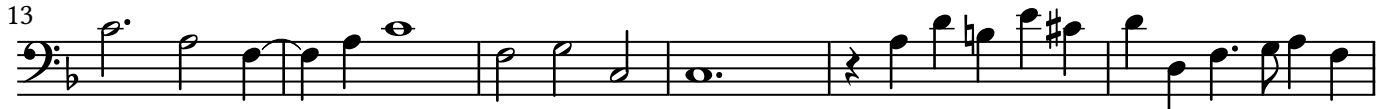
9. Sir Henry Umptons Funerall

5

10

10. M. John Langtons Pavan

11. The King of Denmarkes Galiard



12. The Earle of Essex Galiard



13. Sir John Souch his Galiard



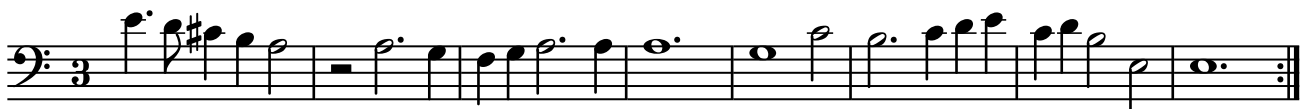
14. M. Henry Noell his Galiard



15. M. Giles Hobies Galiard



16. M. Nichol. Gryffith his Galiard



17. M: Thomas Collier his Galiard

with 2. Trebles



18. Capitaine Digorie Piper his Galiard



19. M. Buctons Galiard

20. M^{rs.} Nichols Almande

21. M. George Whitehead his Almand

