
John
Dowland
(1563 - 1626)

Lachrimæ or Seaven Tears

FIGURED IN SEAVEN PASSIONATE PAVANS
with divers other pavans, galliards and allemands
set forth for the Lute, Viols or Violins, in five parts

London 1605

Quintus 

1. Lachrimæ Antiquæ

Musical score for '1. Lachrimæ Antiquæ' in 3/8 time. The score consists of five staves of music. The first staff begins with a treble clef and a common time signature. The music is written in a single melodic line. Measure numbers 5, 10, 15, 20, and 25 are indicated above the staves. The piece concludes with a double bar line and repeat dots.

2. Lachrimæ Antiquæ Novæ

Musical score for '2. Lachrimæ Antiquæ Novæ' in 3/8 time. The score consists of five staves of music. The first staff begins with a treble clef and a common time signature. The music is written in a single melodic line. Measure numbers 5, 10, 15, and 20 are indicated above the staves. The piece concludes with a double bar line and repeat dots.

3. Lachrimæ Gementes

Musical score for '3. Lachrimæ Gementes' in 3/8 time. The score consists of five staves of music. The first staff begins with a treble clef, a common time signature, and a key signature of one flat. The music features a mix of eighth and sixteenth notes, with some rests. Measure numbers 5, 10, 15, 20, and 25 are indicated above the staves. The piece concludes with a double bar line and repeat dots.

4. Lachrimæ Tristes

Musical score for '4. Lachrimæ Tristes' in 3/8 time. The score consists of five staves of music. The first staff begins with a treble clef, a common time signature, and a key signature of one flat. The music features a mix of eighth and sixteenth notes, with some rests. Measure numbers 5, 10, 15, 20, and 25 are indicated above the staves. The piece concludes with a double bar line and repeat dots.

5. Lachrimæ Coactæ

Musical score for '5. Lachrimæ Coactæ' in 3/8 time. The score consists of five staves of music. The first staff begins with a whole rest followed by a series of eighth and sixteenth notes. The second staff contains a repeat sign and ends with a fermata. The third staff continues the melodic line with various note values. The fourth staff includes a repeat sign and a fermata. The fifth staff concludes the piece with a final cadence and a fermata.

6. Lachrimæ Amantis

Musical score for '6. Lachrimæ Amantis' in 3/8 time. The score consists of five staves of music. The first staff starts with a whole rest and a series of eighth notes. The second staff features a repeat sign and a fermata. The third staff continues the melody with eighth and sixteenth notes. The fourth staff includes a repeat sign and a fermata. The fifth staff concludes the piece with a final cadence and a fermata.

7. Lachrimæ Veræ

Musical score for '7. Lachrimæ Veræ' in bass clef, common time. The score consists of six staves of music. The first staff begins with a treble clef and a common time signature. The second staff is marked with a '5' at the beginning. The third staff is marked with a '10' at the beginning. The fourth staff is marked with a '15' at the beginning. The fifth staff is marked with a '20' at the beginning. The sixth staff concludes the piece with a double bar line and repeat dots. The music features various note values including quarter, eighth, and sixteenth notes, as well as rests and accidentals.



8. Semper Dowland semper dolens

Musical score for 'Semper Dowland semper dolens' in 3/4 time, featuring a treble clef with a C-clef and a bass clef with an F-clef. The score is divided into measures 1-5, 6-10, 11-15, 16-20, 21-25, 26-30, and 31-35. Measure numbers 5, 10, 15, 20, 25, 30, and 35 are indicated above the staves. The piece concludes with a double bar line and repeat dots.

9. Sir Henry Umptons Funerall

Musical score for 'Sir Henry Umptons Funerall' in 3/4 time, featuring a treble clef with a C-clef and a bass clef with an F-clef. The score begins with measure 1 and includes a fermata over a note in measure 4. Measure number 5 is indicated above the staff. The piece concludes with a double bar line and repeat dots.

Musical score for the first piece, measures 1-25. The score is written in bass clef with a key signature of one flat (B-flat). Measure numbers 10, 15, 20, and 25 are indicated above the staff. A flat symbol (b) is placed above the staff at measure 1 and measure 20. The piece concludes with a double bar line and repeat dots at measure 25.

10. M. John Langtons Pavan

Musical score for the second piece, measures 1-20. The score is written in bass clef with a key signature of one flat (B-flat) and a common time signature (C). Measure numbers 5, 10, 15, and 20 are indicated above the staff. The piece concludes with a double bar line and repeat dots at measure 20.

11. The King of Denmarkes Galiard



7



13



19



12. The Earle of Essex Galiard



9



13



17



21



13. Sir John Souch his Galiard



9



17



14. M. Henry Noell his Galiard



9



17



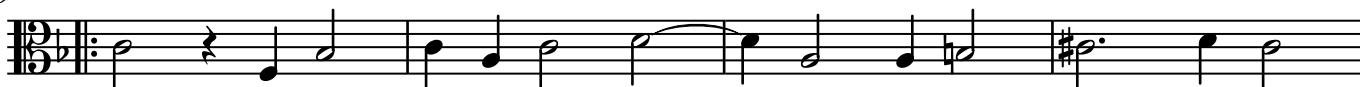
25



15. M. Giles Hobies Galiard



9



13



17



21



16. M. Nichol. Gryffith his Galiard



9



15



23



19. M. Buctons Galiard



9



17

20. M^{rs.} Nichols Almande

7



21. M. George Whitehead his Almand



9



17

